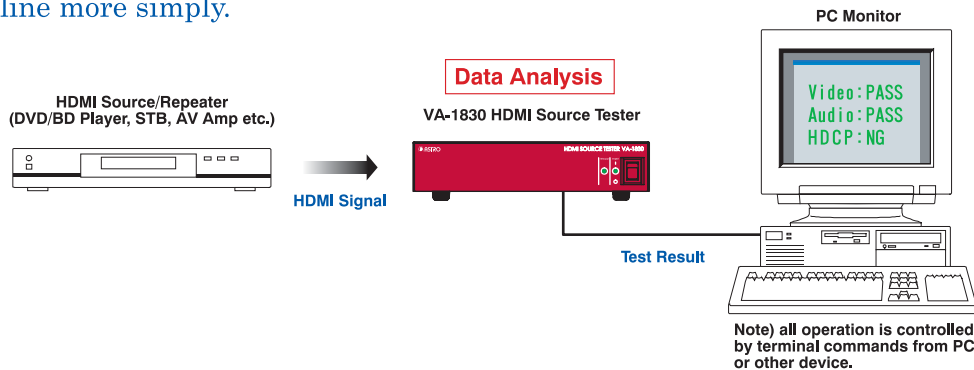


HDMI SOURCE TESTER

VA-1830

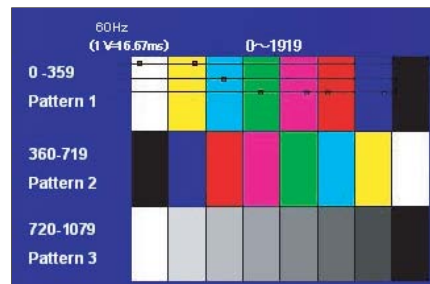


The VA-1830 is the cost effective HDMI Source Tester which enables to test HDMI Source or Repeater equipment such as DVD/Blu-Ray player, STB, AV AMP, Digital Camera in the production line more simply.



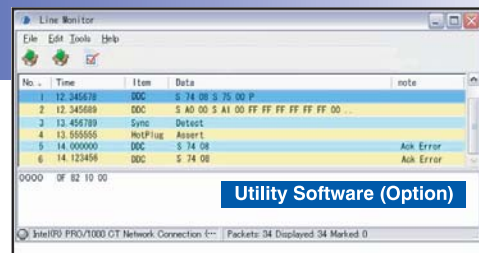
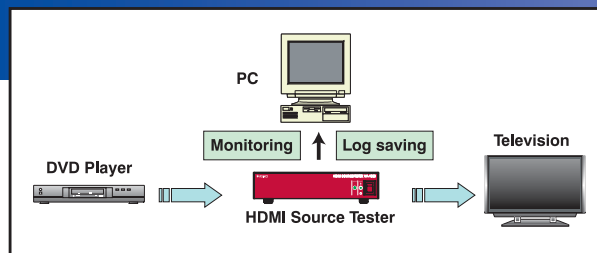
Features

- Various HDMI Test Items
 - (1) 36-bit Video Data Testing
(Max.15 colors can be tested.)
 - (2) Audio Data Testing (L-PCM level, frequency)
 - (3) HDCP, CEC, DDC Line Testing



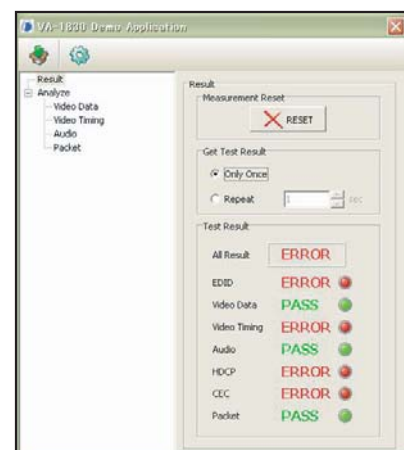
Error detection example

HDMI Through Mode (Monitoring CEC and DDC line status between Sink and Source)



Utility Software (Option)

- PC commands to control the unit via USB, LAN and RS-232C
(Program user's own PC software by using VA-1830 Terminal commands)



Customized PC software in Production Line
This software images are example only.

Specifications

Item		Standard
HDMI input/output	Dot clock	25 to 165MHz
	Transfer rate	25MHz to 225MHz (in case of 12-bit/150MHz)
	Deep color	8, 10 and 12-bit
	Color space	RGB/YCbCr 4:4:4/YCbCr 4:2:2
	In/output signal	TMDS
	HDCP	Acceptable (Ver.1.3)
	I2S/SPDIF 8-ch	Max.192kHz
	DSD 8-ch	Receiving only
	HBR	Receiving only
DDC		DDC2B supported
E-EDID		Ver.1.3
CEA EDID Timing Extension		CEA-861-E
External controls		
RS-232C		Baud rate 9600bps
LAN		10/100BASE-T
USB		HOST, DEVICE
General specifications		
Power supply voltage		AC100 to 240V
Power consumption		10W
Operating temperature range		+5 to 40°C
Operating humidity range		30 to 80%RH (no condensations)
Storage temperature range		-10 to 60°C
Dimensions		210(W) × 44(H) × 240(D) mm (without projected parts)
Weight		2kgs

Rear View

