

# 4K Waveform Monitor

## WM-3206B/WM-3206B-A **HDR**



WM-3206B/3206B-A is a 4K (3840 x 2160 and 4096 x 2160) 17-inch waveform monitor.

Many useful functions are available such as waveform, vector scope, histogram, color space, payload ID analysis etc.

### Features

- Free layout
- Dual Link and 3G-SDI (Level A/B) supported
- Square Division, Dual Link 2-sample interleave division and Quad Link 2-sample interleave division supported
- Automatic formats detection (resolution, frame rate and division)
- ITU-R BT. 2020 supported
- DVI output for displayed image
- Focus assist functions, Magnify (Dot-by-Dot or x 2) and peaking with selectable color
- Image capture function

### Display Items

The Following items are on pallets whose position and size are adjustable freely.

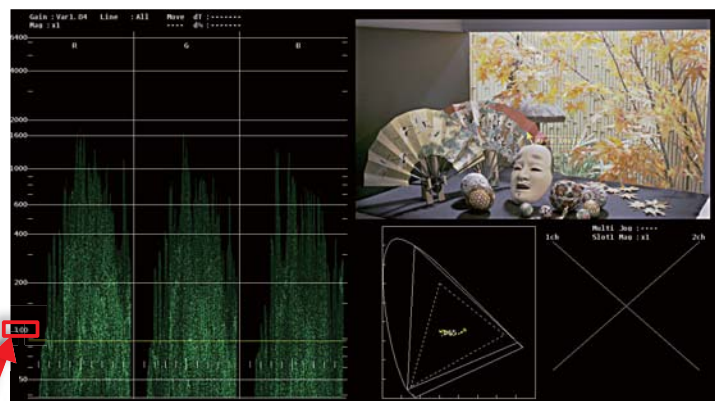
- |  |                               |
|--|-------------------------------|
| ● Picture  | ● Audio level meter           |
| ● Waveform   | ● Phase between input signals |
| ● Vector scope   | ● Audio phase                 |
| ● Histogram  | ● Input signal information    |
| ● xy / uv Color space                                  | ● Time code                   |
| ● Status (Digital value from an arbitrary line sample) | ● Tally                       |

## HDR Function

### Features

- Various HDR formats can be chosen.  
The RGB level of each scale is displayed.
- Hybrid Log-Gamma (ARIB STD-B67), Dolby PQ Curve (SMPTE ST 2084), S-Log (1, 2, 3), Canon Log (1, 2, 3), V-Log (L) are supported.
- IRE100% position is displayed clearly so that the HDR area can be checked easily and intuitively.
- Any section of a waveform can be magnified, in order to check details more precisely.
- Overlaying Range Highlight

### Display sample



Each HDR level is displayed in IRE (%).

IRE100% position is displayed clearly so that HDR area can be checked easily and intuitively.

## Specifications

### Input Format

Input/ Output	3G-SDI x 4 (Level A, B)	Color Space	YCbCr 4:2:2
		Color Depth	10 bits
		Resolution	2048/1920 x 1080 x 4ch
		Frame Rate	60p, 59.94p, 50p, 48p
	3G-SDI x 4 (Level A, B)	Color Space	RGB 4:4:4, YCbCr 4:4:4
		Color Depth	10 bits/12 bits
		Resolution	2048/1920 x 1080 x 4ch
		Frame Rate	60i, 59.94i, 50i, 48i, 30p, 29.97p, 25p, 24p, 23.98p, 30PsF, 29.97PsF, 25PsF, 24PsF, 23.98PsF
	3G-SDI x 2 Level B 2-sample interleave division	Color Space	RGB 4:4:4, YCbCr 4:2:2
		Color Depth	10 bits
		Resolution	4096/3840 x 1080 x 2ch
		Frame Rate	30p, 29.97p, 25p, 24p, 23.98p
	3G-SDI x 4 Level A/B 2-sample interleave division	Color Space	YCbCr 4:2:2
		Color Depth	10 bits
		Resolution	2048/1920 x 1080 x 4ch
		Frame Rate	60p, 59.94p, 50p, 48p
	3G-SDI x 4 Level A/B 2-sample interleave division	Color Space	RGB 4:4:4, YCbCr 4:2:2
		Color Depth	10 bits/12 bits
		Resolution	2048/1920 x 1080 x 4ch
		Frame Rate	30p, 29.97p, 25p, 24p, 23.98p
	HD-SDI x 4	Color Space	YCbCr 4:2:2
		Color Depth	10 bits
		Resolution	2048/1920 x 1080 x 4ch
		Frame Rate	60i, 59.94i, 50i, 48i, 30p, 29.97p, 25p, 24p, 23.98p, 30PsF, 29.97PsF, 25PsF, 24PsF, 23.98PsF
	HD-SDI x 8 (Dual Link SDI)	Color Space	YCbCr 4:2:2
		Color Depth	10 bits
		Resolution	2048/1920 x 1080 x 4ch
		Frame Rate	60p, 59.94p, 50p, 48p
	HD-SDI x 8 (Dual Link SDI)	Color Space	RGB 4:4:4, YCbCr 4:4:4
		Color Depth	10 bits/12 bits
		Resolution	2048/1920 x 1080 x 4ch
		Frame Rate	60i, 59.94i, 50i, 48i, 30p, 29.97p, 25p, 24p, 23.98p, 30PsF, 29.97PsF, 25PsF, 24PsF, 23.98PsF

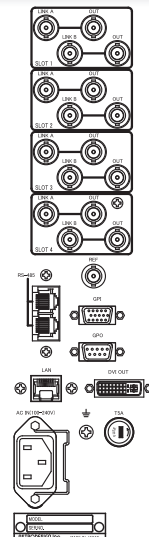
### LCD Panel Specification

Switching	TFT
Color depth	8 bits (16,777,216 colors)
Contrast	700:1
Response Speed	22ms (Typ: White 90%⇒Black 10%+Black 10%⇒White 90%)
Viewing angle	UD:-60° to 80°, LR:-80° to 80°
Brightness	700cd/m <sup>2</sup>
Size	17.5 inches
Resolution	1280(H) x 768(V) Pixels
Pixel Pitch	0.297(W) x 0.297(H) mm

### General Specification

Power Requirement	WM-3206B: AC100-240V (50/60Hz) WM-3206B-A: DC9-18V
Power Consumption	70W MAX
Operating Temperature Range	0 to 40°C
Operating Humidity Range	20 to 80%RH (No Condensation)
Dimensions	416(W) x 320(H) x 80(D) mm (Excluding Protrusions)
Weight	Approx. 7.5 kg

### Rear View



WM-3206B